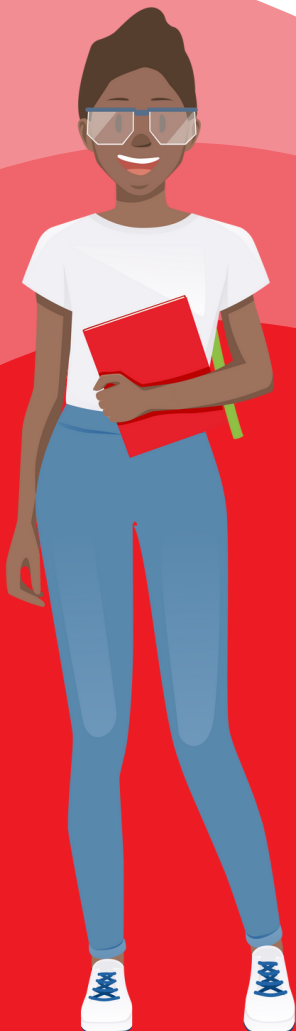


Community Action Suffolk Recruitment Pack

Volunteering Development Manager



Welcome from Hannah Reid, Chief Executive of Community Action Suffolk

Dear Applicant

Thank you for your interest in working for CAS and the role we are currently advertising.

CAS is a diverse and responsive organisation and I am incredibly proud to lead such a trusted and passionate team. Our enabling work has such a positive impact on VCFSE organisations and the communities they serve.

This application pack should provide you with all the information you need about the role, as well as an idea as to what CAS is all about, what we do and where we see our future.

We achieve this through our high performing and motivated staff team as well as our person centred approach to our work keeping people and communities at the heart of what we do. As well as making a difference in our communities you will find that the CAS team provide a friendly and collaborative environment to work in and no two days are the same.

I hope that you will find this opportunity both interesting and exciting and will consider submitting an application to join us.

Hannah Reid, Chief Executive



www.communityactionsuffolk.org.uk



@CASuffolk



@commactionsuff



community-action-suffolk



@communityactionsuffolk

About CAS

We exist to ensure the sector is supported, safe and sustainable. We provide (or signpost) whatever is needed behind the scenes to enable this, so the sector can concentrate on doing what it does best – making Suffolk an incredible place in which to live and work.

CAS supports organisations in the sector to enable them to operate more effectively. We provide a voice for organisations and groups who may not otherwise be heard and represent their interests to the private and public sectors. We do this through conferences, workshops, events, specialist networks, and by consultation with the sector.

We work closely with a wide variety of partners from other sectors including Suffolk County Council, Borough and District Councils, Town and Parish Councils, Health and Police, along with partners from the private sector such as New Anglia Local Economic Partnership and local businesses.

All these parties have a vital role in improving the lives of people in Suffolk and by working together we ensure Suffolk is the best place it can be for all those living and working here.

Our Vision

Community Action
Suffolk's vision is that
Suffolk is a county
where every community
aspires, thrives and
grows.

Our Mission

Community Action Suffolk's
mission is to strengthen and
champion community action in
Suffolk by supporting the
voluntary, community and social
enterprise (VCFSE) sector in its
work.



www.communityactionsuffolk.org.uk



@CASuffolk



@commactionsuff



community-action-suffolk



@communityactionsuffolk

Our mission is underpinned by our **4 Strategic Priorities...**



...and our 2 new **Development Priorities...**



Addressing
Inequalities
&



Tackling the
Climate
Emergency

www.communityactionsuffolk.org.uk



@CASuffolk



@commactionsuff



community-action-suffolk



@communityactionsuffolk

CAS VALUES



Collaborative



Enabling



Person
Centred



Trusted



Responsive

Our **values** represent who we are, how we work, our aspirations, purpose, & our goals.

Chosen by our staff team, we reflect them in everything we do both internally and externally.

www.communityactionsuffolk.org.uk



@CASuffolk



@commactionsuff



community-action-suffolk



@communityactionsuffolk

The role at a glance

Hours - Full time, 37.5 hours per week

Salary - £33,669.00 per annum

Start date - As soon as possible

Location - Community Action Suffolk, Brightspace, Ipswich
or The Kirkley Centre, Lowestoft with blended home working
Regular travelling around the county is required

Accountable to - Head of Voluntary and Community Action

Contract term - Permanent

Application deadline - 9.00am Friday 16th February 2024

Interview date - Week commencing 19th February 2024

Please contact louise.bradshaw@communityactionsuffolk.org.uk for more information



www.communityactionsuffolk.org.uk



@CASuffolk



@commactionsuff



community-action-suffolk



@communityactionsuffolk

JOB DESCRIPTION

JOB TITLE: Volunteering Development Manager	SALARY: £33,669.00 per annum
HOURS: 37.5 hours per week	TERM: Permanent
REPORTS TO: Head of Voluntary and Community Action	LOCATION: Office base Brightspace Ipswich or Kirkley Centre, Lowestoft
JOB PURPOSE	
<ul style="list-style-type: none"> • To manage the Volunteering team and their volunteering projects at CAS • To help establish and keep CAS at the forefront of Volunteering both county wide and nationally • To work towards increasing volunteering, awareness of it's impact, and high-quality opportunities for organisations and individuals in Suffolk • To be an ambassador for CAS supporting and promoting CAS's diverse range of products and services • To be a positive and flexible member of a high performing, innovative and enterprising Community Services Department and the wider CAS team. 	
MAIN DUTIES AND RESPONSIBILITIES	
<p>To manage the Volunteering team and their volunteering projects at CAS</p> <ul style="list-style-type: none"> • Be a strong, dynamic and effective manager for the Volunteering team and projects • Effectively line manage the Volunteering team and projects which includes - Employer Supported Volunteering, Training and Learning, Good Neighbour Network • Continually review and develop existing, new, free and paid for resources and services provided by CAS provided by the volunteering team • Identify and leverage further funding to support Volunteering services • Effectively communicate and promote the benefits of Volunteering • Maintain an up-to-date knowledge of the scope and breadth of Volunteering across Suffolk and surrounding areas • To monitor and regularly review CAS volunteering budgets, working with the Head of Voluntary and Community Action to ensure effective budget management • To manage and support the volunteering team in promoting volunteering opportunities, including ESV and county wide or national campaigns <p>To help establish and keep CAS at the forefront of Volunteering both county wide and nationally</p> <ul style="list-style-type: none"> • To continually scan and take advantage of funding and fundraising opportunities for Volunteering and other infrastructure initiatives • To provide CAS action and guidance for the Suffolk Volunteer Strategy with key stakeholders and partners 	

- To manage the communications for the Volunteering Survey report and ensure any actions arising are put in place
- To develop local relationships with the statutory, business and VCFSE sector and position CAS as an organisation ready and able to support Volunteering across Suffolk.
- To manage volunteering initiatives which emerge from key events in the county e.g Covid
- To engage in external meetings where CAS representation is required to support conversations/actions re: volunteering I.e. Engaged Communities
- To engage, attend or ensure representation at external events relevant to CAS and volunteering in Suffolk
- To support the Head of Voluntary and Community Action in developing, writing and securing funding opportunities
- To lead on a Volunteering Network in Suffolk, to support leaders and organisations in volunteer development, recruitment, retention and campaigns etc.
- To provide one to one support to volunteer leaders with policy and practice

To work towards increasing volunteering, awareness of it's impact, and high-quality opportunities for organisations and individuals in Suffolk

- Promotion and upkeep of the Volunteer Suffolk platform, including but not restricted to: Updating website content, social media content press releases, radio, case study collation, newsletters
- Working with the Marketing and Communications Manager and Head of Community and Voluntary Action to align with CAS's wider marketing strategy
- Lead on CAS volunteering campaigns, including Suffolk Action Week, Work of Heart Campaign, Trustees' Week, Volunteers' week
- To work alongside the Volunteer team in supporting individuals to find volunteer placements, providing one to one support with individuals where necessary
- To take an innovative approach to developing awareness of volunteering in Suffolk, it's benefits and CAS

To be an ambassador for CAS supporting and promoting CAS's diverse range of products and services

- Develop and maintain an expert working knowledge about the diverse range of CAS's products and services and seek to raise awareness and promote these wherever possible
- Be a first point of contact to share knowledge about who to turn to for support in CAS
- To work with the wider team to raise awareness of CAS's volunteering services so they can promote CAS's diverse range of projects to their stakeholder groups
- Contribute to the development of local and county wide marketing and communication strategies and plans and work with CAS's marketing team to promote CAS's volunteering offer both internally and externally
- Actively promote the benefits of the CAS network

To be a positive and flexible member of a high performing, innovative and enterprising CAS team

- To contribute to and maintain with the team a library of resources and signposting material including online
- To work collaboratively with colleagues to find solutions to issues as they arise
- To demonstrate and apply the CAS values in the services supplied
- Undertake any other duties as requested by the Head of Voluntary and Community Action
- Effectively communicate and promote the benefits of volunteering
- Ensure regular monitoring and reporting to appropriate bodies for active programmes and collate examples of good practice

PERSON SPECIFICATION

Assessment methods: I – Interview / P- Presentation / AP- Application Form / T- Test

	Essential	Desirable
Experience, Knowledge & Skills	<ul style="list-style-type: none"> • A good understanding of volunteering and community development services (AP, I) • Good knowledge of the issues affecting Suffolk and of rural issues (AP, I) • Demonstrable experience of supporting and developing the VCFSE sector (AP) • Previous experience of working within a volunteering role at officer level or above (AP, I) • Ability to motivate and manage staff effectively (AP) • Excellent presentation skills and the ability to share and disseminate knowledge and learning in a range of different settings including chairing and facilitating meetings (AP) • Proven track record in developing, establishing and maintain good working relationships both internally and externally (AP, I) • Experience in organising and managing priorities and time (AP, I) 	<ul style="list-style-type: none"> • The ability to communicate at all levels with excellent listening skills (AP, I) • Comfortable in managing and setting budgets (AP, I) • Excellent working knowledge of modern IT (AP) • Experience of, or transferable skills for, updating website content with excellent attention for detail (AP, I) • Experience in developing and managing programmes and projects (AP, I) • Understanding of externally funded projects and monitoring requirements (AP, I) • Good understanding and experience of how to run and lead successful campaigns (AP, I) • Experience of setting and working to targets within an outcome framework, including income generation (AP, I) • Experience of communicating and awareness raising on multiple platforms, such as social media, press releases and events (AP, I)

	Essential
Attributes	<ul style="list-style-type: none"> • A commitment to CAS, our values and an understanding of our services (AP, I) • A commitment to tackling inequalities, promoting diversity and inclusion across all services (AP) • Excellent team player with a positive attitude, flexible and a can-do attitude to “muck in” where required (AP) • A collaborative and solution-based approach to solving problems. (AP, I) • Ability to self-manage, organise, balance, and deliver against a range of competing priorities (AP, I) • An ability to contribute to an emotionally healthy and fun working environment (AP) • Frequent travel around the county and so an ability to travel within Suffolk or further afield as necessary (AP, I)

How to Apply

Apply Now



To apply you will need to complete our application form by:

9.00am Friday 16th February 2024

You can find a link to the application form below:

<https://www.communityactionsuffolk.org.uk/wp-content/uploads/2023/10/Community-Action-Suffolk-Application-Form-October-2023.docx>

As part of your application you will be asked to:

- Tell us why the position appeals to you, and how your skills and experience demonstrate your suitability for the role.
- Provide full details of your education and employment history including dates
- Include how you have demonstrated the CAS values of: Person Centred, Collaborative, Trusted, Responsive and Enabling within your supporting statement
- Provide details of two referees. One of your referees should be your current or most recent employer. All posts are subject to satisfactory references as detailed in the selection process section below.

If you would like to have an information discussion about the role, please contact

Louise Bradshaw on **01473 345400** or email
louise.bradshaw@communityactionsuffolk.org.uk

Your completed application form should be sent to

louise.bradshaw@communityactionsuffolk.org.uk or posted to Community Action Suffolk, Brightspace, 160 Hadleigh Road, Ipswich, IP2 0HH. Please mark your application for the attention of Louise Bradshaw.

When submitting an application please state where you saw the post advertised.

www.communityactionsuffolk.org.uk



@CASuffolk



@commactionsuff



community-action-suffolk



@communityactionsuffolk



to completing our Application Form

CAS aims to ensure that comparison between applicants for posts is thorough, fair and in line with our Equal Opportunities Policy. It is therefore essential that you complete the application form fully as it will be used to assess whether or not you are shortlisted for an interview.

Please ensure you fully read the Job Description and Person Specification for the role before completing the application form.

The application form is in two sections and section A and the Equal Opportunities Form will be separated from the application before being given to the recruitment panel for shortlisting.

Your application will be assessed against the responses you provide in section B. Please ensure you relate your answers on your application to the requirements set out in the person specification and where possible provide examples. Please address each point in sufficient detail as incomplete sections may impact on the likelihood of your application being shortlisted.

Please do not send us a CV as part of your application or to apply for the role. We will only consider candidates who have completed the application form. If there is insufficient space on the application form, you may attach supplementary sheets but please include your name and the position you are applying for.



www.communityactionsuffolk.org.uk



@CASuffolk



@commactionsuff



community-action-suffolk



@communityactionsuffolk

Selection Process

Shortlisted candidates will be contacted and offered an interview date and time. Candidates will be notified of the method of interview. If the interview is face to face you will be notified of the location the interviews will be held and provided with directions. All interviews will be confirmed via email once agreed.

As part of the interviews candidates will be required to take part in a discussion or presentation about our CAS values. The format for this discussion will be confirmed when the interview date and time is accepted.

Referees

Always ask your referees permission before giving their contact details for your application. One of your referees should be your current or most recent employer/line manager, academic tutor or a volunteer manager if applicable. Please do not give details of family and friends.

Referees will only be contacted after an offer has been made and accepted. We will confirm with you before we approach your referees.

Accessibility and Adjustments

We are committed to providing reasonable adjustments throughout our recruitment process and we will always endeavour to be as accommodating as possible.

If you require a different format of the application form, such as large print, or you would like to discuss any specific requirements, please get in touch with us at louise.bradshaw@communityactionsuffolk.org.uk or call 01473 345400 and ask to speak to a member of the HR Team.

Equality, Diversity and Inclusion

CAS is an equal opportunities employer which welcomes applications from all sections of the community.

Everyone can expect to be treated with consideration and respect and CAS is committed to providing an inclusive environment for all. Good working relationships enable the full potential, creativity and productivity of each individual, in an atmosphere where everyone can learn and work without prejudice, discrimination or harassment.

The application pack contains an Equal Opportunities Form which we encourage you to complete and return with your application. Please be assured that this form is not part of the application process and it is removed prior to the shortlisting process.

The data we obtain from these forms is analysed to support our commitment to equal opportunities and the information will be used to help guide our recruitment strategies.

www.communityactionsuffolk.org.uk



@CASuffolk



@commactionsuff



community-action-suffolk



@communityactionsuffolk

Benefits of working for CAS

Our people are passionate about what we do and the difference it makes to the communities we work in and the people that live in Suffolk. Working in the Voluntary, Community and Social Enterprise sector has never been more interesting, offering talented people the opportunity to innovate, use their skills and expertise to make a difference.

We recognise that our people are central to what we do and the services we provide. We are committed to creating positive and fulfilling roles and providing environments where people flourish, develop and have the opportunity to make a real difference in delivering good quality services.

The benefits we offer to colleagues to support them in delivering their crucial role includes the following:

- ✓ Blended working where role allows
- ✓ Flexible working options to support work/life balance
- ✓ 33 days increasing to a maximum 36 (FTE) annual holiday which includes an allowance for bank holidays
- ✓ Up to 4% matched pension contribution
- ✓ 2 days pro rata volunteering days to support volunteering in Suffolk
- ✓ Staff Discounts Scheme for a range of retailers including; shopping, holidays, insurance, eating out and health and leisure activities
- ✓ Company Sick Pay Scheme
- ✓ Continued Professional Development for job related development
- ✓ Family Friendly policies and practices
- ✓ Tailored induction



@CASuffolk



@commactionsuff



community-action-suffolk



@communityactionsuffolk

Why work for Community Action Suffolk?

Here's what our staff have to say...

"Every day is different at CAS because the services we offer are so varied, and you never quite know what ideas or challenges our customers will want support with. This provides lots of opportunities to connect and collaborate with colleagues across the organisation, who may be working with the same people, or have relevant knowledge or skills to support you with your work. Working in this way is a great way to get to know colleagues across different teams and to share ideas and experiences, and staff are very supportive of each other.

As an organisation, CAS enables staff to have an effective work life balance, through blended working policies, and flexibility with working hours when needed. Due to this, I have been able to move from part time working into a full time role that fits around my commitments as a parent.

In the 6 years I have worked for CAS I have been able to progress through variety of roles. Having started at CAS as the receptionist, this gave me a great understanding of the wide range of services and support that CAS provides. I have been given the opportunity to undertake training, learn new skills and work on a variety of projects over the years and now co-ordinate 2 projects within the organisation." **Liz - Community Food Partnership Officer**

"CAS show they care for their employees. As I had dedicated 10 years to customer service at XXXX, I was nervous about moving on to a new career, but CAS has definitely proved most beneficial for me and my family. My health and wellbeing have improved massively and the work environment, including all the staff, have been most welcoming – it's a joy to be at work."

Hannah - CAS Subsidiary Officer

"Having worked in the corporate world for over 30 years. Working for CAS has been like a breath of fresh air. I received a very warm and professional induction. The staff are extremely helpful, friendly and nothing is too much trouble. A thoroughly enjoyable place to work."

Trevor – Head of Voluntary & Community Action

"When I started working at Community Action Suffolk, I was taking a leap from part time work around my young family to working full time. They assured me that flexible working was in place and now, nearly two years on, I wish I had joined sooner! CAS ensures there doesn't have to be a choice between being a parent, or working, by allowing for there to be a healthy work-life balance. The team is amazing, everyone supports each other, it really is a joy to come to work and see colleagues. Everyone is valued and, as an organisation, the staff really are kept at the heart of the work they do. Training opportunities, personal CPD and staff progression are encouraged, which allows for personal and professional growth at your own pace. The projects that CAS run are really varied, but everyone supports each other and genuinely takes interest in what is going on within the community. I feel fortunate to be part of a fantastic organisation who I am proud to represent and work for."

Sarah - Community Development Officer



"Well, what can I say! I've been here since 1998 and I can honestly say I fell into my first job here purely by chance. I didn't know anything about the charity or what it did at that point, and I applied on a whim! I liked the sound of it. I started as a part time secretary and librarian (for the smallest library ever!). Since then, I have undertaken various roles at CAS and within one of its predecessor organisations, varying from working with Village Halls, being the Rural Transport Partnership Officer, Quality Standards Officer, Reception and Buildings Supervisor and Community Oil Buying Co-ordinator! Pretty varied roles I'm sure you'll agree. Currently my work is around undertaking Research and supporting our Network Membership scheme. The one consistent thing throughout my time with CAS is the lovely people you get to meet and work with. That is the overriding comment made when people join or leave the organisation, that everyone here is lovely and that we all work as a team. Though many of us work in different areas, on different projects and at different times of the day and week and from different locations, there is always someone around who you can bounce ideas around with, ask for help from or simply have a chat with."

Nat – Resources Officer

www.communityactionsuffolk.org.uk



@CASuffolk



@commactionsuff

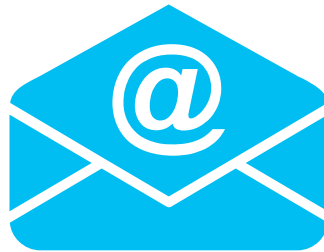


community-action-suffolk



@communityactionsuffolk

Get in touch



To find out more about Community
Action Suffolk please visit our
website

www.communityactionsuffolk.org.uk

Call us on *01473 345400*

or email

info@communityactionsuffolk.org.uk



www.communityactionsuffolk.org.uk



@CASuffolk



@commactionsuff



community-action-suffolk



@communityactionsuffolk