

# CAS Strategic Plan on a Page 2025-28



**Our Vision:** Suffolk is a county where every community aspires, thrives, and grows

**Our Mission:** To support, strengthen & champion Suffolk's Voluntary, Community, Faith & Social Enterprise (VCFSE) sector and its vital work

## ABOUT SUFFOLK'S VCFSE SECTOR

(Voluntary, Community, Faith & Social Enterprises)



### Size of Suffolk Registered Charities (2936)

- 87% have income less than £100,000
- 98% have an income less than £1m
- 53% have an income less than £10,000



### CHALLENGES FOR VCFSE ORGANISATIONS IN 2024



### Target Market

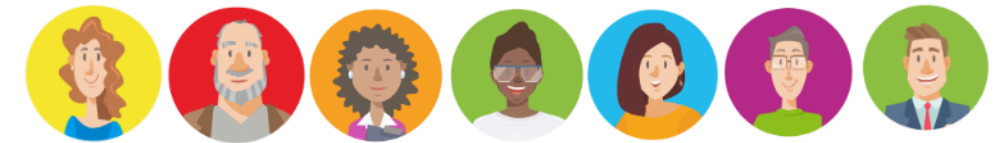
While our primary audience is the VCFSE sector in Suffolk, we work across sectors in partnership with a number of stakeholders including public sector, private sector, health and communities.

## Our Values:

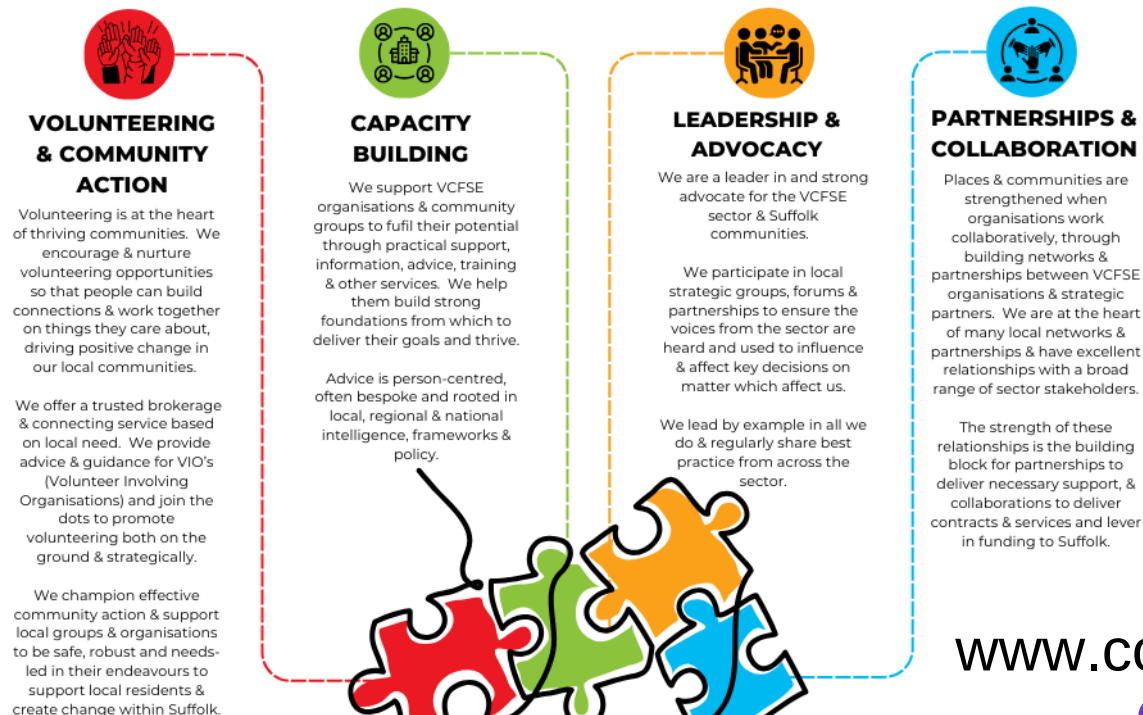


## • STRATEGIC PRIORITIES 2025-28 •

1. We will focus on sustainable income growth to ensure CAS remains an essential business in Suffolk, driven by continuous improvement.
2. We will deliver high quality needs-led services which enable Suffolk's VCFSE sector to deliver projects, activities & services in our communities in a safe, robust & sustainable way
3. We will promote the 4 functions of local infrastructure to increase awareness & understanding of our role with key stakeholders
4. We will champion, promote, & advocate for, the VCFSE sector in Suffolk in order to create & maintain influential, equitable & beneficial relationships across sectors



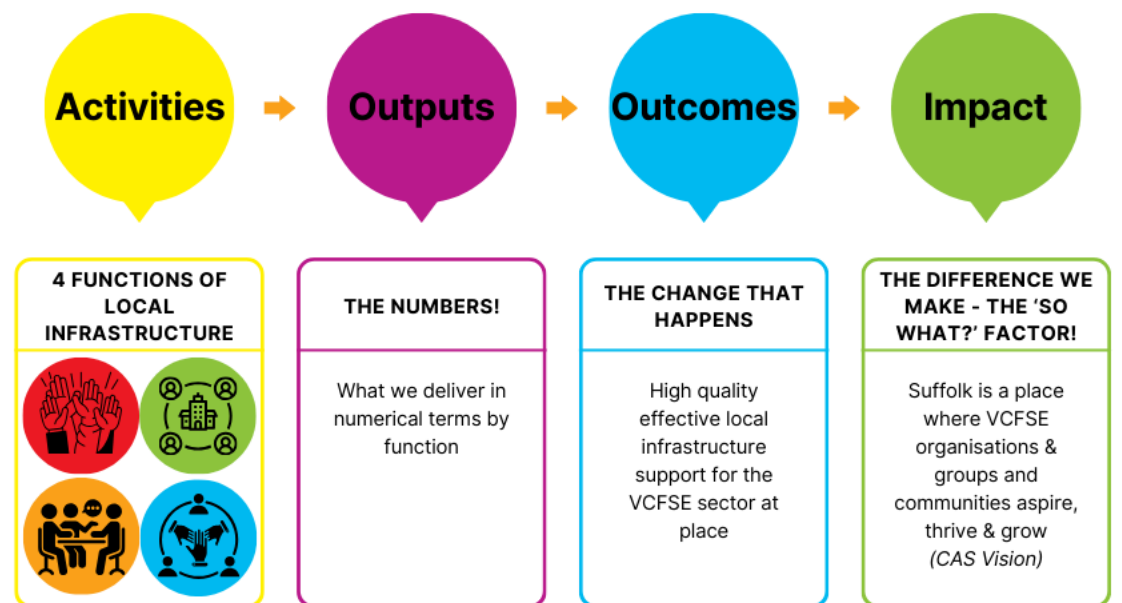
## • CAS 4 FUNCTIONS OF LOCAL INFRASTRUCTURE •



## Key Actions

- Income & resource review Q4 24/25
- Review CAS marketing & comms plan Q1 25/26 (structured by 4 functions of LIOs)
- Create new service implementation plans Q1 25/26
- 24/25 social value analysis Q1 24/25 (rec.)
- Quarterly CAS impact & social value reporting from Q1 25/26
- New quarterly 'Suffolk Voluntary Sector' magazine from Q1 25/26
- Annual sector consultation & State of the Sector report from Q4 24/25 (rec.)
- Annual strategy review & update Q4 (rec.)

## • CAS THEORY OF CHANGE •



[www.communityactionsuffolk.org.uk](http://www.communityactionsuffolk.org.uk) e: [info@communityactionsuffolk.org.uk](mailto:info@communityactionsuffolk.org.uk)



@commactionsuff



community-action-suffolk



@communityactionsuffolk